



SAGE BUSINESSWORKS

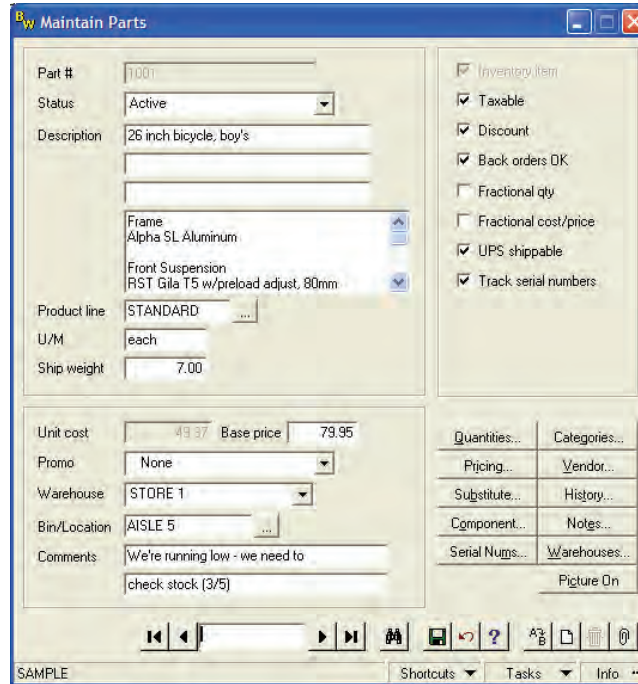
INVENTORY CONTROL

SPECIFICATIONS (MAXIMUM LIMITS)

- Parts Virtually Unlimited**
- Substitutes per part 5
- Costing methods 4
- Price levels 25
- Quantity price break levels 5
- Product categories 5
- Quantity per part 9,999,999
- Cost per part \$9,999,999.99
- Price per part \$9,999,999.99
- Decimal places in part quantities 3
- Decimal places for costs 4
- Decimal places for prices 4
- Product lines Unlimited**
- Warehouses 99
- Months to keep history 60
- Characters in serial number 26
- Serial numbers per part 5000
- Characters in transaction description 20
- Characters in bin location 10
- Characters in part ID 20

REPORTS

- ABC Analysis Report
- Adjustments Transaction Register
- Bin Ticket
- Business Graphics
- Component Use List
- Cost List
- Flash Report
- Inventory Low Stock Report
- Inventory Overstock Report
- Inventory Performance Report
- Issues Transaction Register
- Location List
- Margin Analysis Report
- Master Parts List
- On Hand Detail Report
- Physical Inventory Variance Report
- Physical Inventory Worksheet
- Pick List
- Price List
- Product Line List
- Receipts Transaction Register
- Returns Transaction Register
- Sales Promotions List
- Serialized Inventory Reports
- Stock Status Report
- Subassembly Detail Report
- Subassembly List
- Substitute Parts List
- Transaction Summary Report
- Transaction Detail Report
- Vendor Supply List
- Warehouse Stock Report



Successful, well-organized businesses rely heavily on their inventory management system to make certain they have adequate inventory levels to satisfy their customers. The Inventory Control module for the Sage BusinessWorks Accounting system provides this level of control by offering high-end features normally reserved for large companies, including: light manufacturing capabilities, serial number tracking, and multi-warehouse support. The module even has an image library feature that allows you to attach a picture to each part.

Improved customer service leads to increased profitability. And, when integrated with our Accounts Receivable and Order Entry modules, Inventory Control can significantly boost your customer service levels while operating as the cornerstone of an effective manufacturing or distribution solution. For more complex project management, Inventory Control can be coupled with the Job Cost module to help track all inventory-related expenses for a project. Inventory tracking is enhanced even more when integrated with the Custom Office module, which creates detailed spreadsheets to provide further analysis of inventory performance.

The Inventory Control system offers comprehensive reporting capabilities to keep you on top of inventory status. It can help bring about the creation of new or improved purchasing policies, sales policies, pricing methods, and even enhanced customer service. By using Sage BusinessWorks, you will have the tools to create an inventory system with the depth to meet your company's needs for years to come.

Specifications denoted with an asterisk () are practical limits. They are to be used as guidelines only and do not necessarily reflect the actual limitation. Individual requirements may vary based on the system you are using.

**Limited only by disk space.



Sage BusinessWorks

Inventory Control

“... With the stock turnaround reports in Sage BusinessWorks, I know exact quantities on hand. I can prevent over- or under-purchasing inventory based on the turnover rate and the average stock on hand.”

Megan Twitchell, Bookkeeper
Rising Sun Enterprises, Inc.

FEATURES

General Features

- Tracks back orders and sales promotions when used in conjunction with the Order Entry module.
- Provides complete physical inventory capabilities and makes inventory tracking easy with worksheets and variance reports.
- Provides instant inquiry of part information, including receipts, issues, returns, and adjustments.
- Allows you to post charges to the Job Cost module for more complete tracking of materials used on a project.
- Tracks minimum, maximum, and order point stocking levels for each part to help you keep your stock quantities at optimum levels.

Maintenance Features

- Tracks quantities and history for up to 99 user-defined warehouses, and provides a transfer option that allows parts to be easily moved between warehouses.
- Tracks serial numbers for parts and indicates when parts are received, reserved, or issued.
- Stores and displays images of your parts, allowing you to see a part and verify its description when talking to a vendor or customer.
- Provides four costing methods: Standard, Average, FIFO, and LIFO.
- Maintains complete information for each inventory part, including on-hand, backorder, and on-order quantities, vendors, substitute items, components, and transaction history for up to 60 months.
- Provides “model” parts for easy addition of new parts to inventory.
- Supports fractional costs, prices, and quantities for stock and non-stock items.
- Provides four pricing methods (absolute, margin, markup, and base) for each part and allows price differences by customer type as well as quantity price breaks.
- Supports up to 25 price levels (which can be activated on a part-by-part basis) and five quantity breaks to facilitate flexible pricing schemes.
- Quickly locates parts, product lines, purchase orders, accounts payable vendors, and general ledger accounts with a search feature.
- Customize part lookups to include only active items that are in stock.
- Allows classification of parts on inventory reports, as well as the general ledger posting.
- Allows five user-defined product categories to be assigned to parts that further describe them (for example, size, style, and color).
- Lets you assign up to five substitute parts for each inventory part, so your customers won't have to wait when a specific part is unavailable.
- Allows global changes to multiple part records at the same time to expedite record updates.
- Permits pricing information for parts to be updated automatically through the global price change option.

Processing Features

- “Builds” components and labor into finished items with the subassembly option, which automatically adds built parts to inventory and removes components from stock.
- “Unbuilds” or “unpacks” assembled parts into components or individual items.
- Allows entry of receipts, issues, returns, and adjustments.
- Allows adjustment of inventory costs after parts have been received.

Reporting Capabilities

- Order Recommendation report provides the information you need to maintain adequate stock levels.
- Sorts reports by part number, part description, vendor, product line, or bin location.
- Provides numerous inventory reports to analyze inventory performance and control your inventory investment.

Packaged to provide your business with an abundance of features at an affordable price, Purchase Order is included with the Inventory Control module at no additional charge. For more information on how Sage BusinessWorks Purchase Order can help your business operate more smoothly, please review the Purchase Order specification sheet.